

Through Eyes of Our Customer



Mr. Mahendra Sangoi
Owner - Ramdev Blocks
Mumbai.

We purchased first block machine in 1995 from Columbia Machine INC, Vancouver. Thereafter, we bought 3 machines from Columbia in the subsequent 10 years. Columbia's Concrete Block Machine is the best machine in the world and there is still no comparison.

Last 10-15 years, we have witnessed lot of changes in this Industry. It has become lot more labor dependent because of which builders and contractors are running towards light weight Concrete Blocks, however they do not understand the problems associated with this. Usage of AAC blocks creates lots of cracks and seepage in the high rise buildings. Infact many of European countries have banned usage of these blocks. Only the established builders who want to do good work and provide good quality products to customers, have stopped using AAC blocks. This trend is however changing slowly and steadily.

The kind of compaction and uniform density obtained in blocks made by Columbia's Machine due to CVT (Vertical Mould Vibration Technology) has never been achieved by any other machine. Our experience with Columbia has been so enriching in these many years that has persuaded us to do lot more business with them. We have been getting good quality products, good service and great training that we never had any problems either with the machine or with the company. We have always referred Columbia Machine to everyone who intended to do good and quality work and will continue doing so.

Welcome to the 8th edition of Columbia Connects,

We are glad to introduce you to the 8th edition of Columbia Connects! Read more about our Big Board Machine from Techmatik and upcoming events in this issue. For any queries, suggestion or questions, write to us at info@colmac.in



In 2016, Columbia Machine, Inc. acquired Techmatik S.A. Headquartered in Radom, Poland. Techmatik is a recognized leader in the design and manufacturing of molds, Big Board Concrete Block Machine, handling equipment, cubing solutions, curing solutions and batching & mixing solutions for the production of paving stones, hardscapes and other dry cast concrete products.

Techmatik offer includes moulds for production of paving blocks and decorative concrete products; modern, high performance concrete block machines; complete production plants; planetary concrete mixers, concrete mixing plants; pallet transfer system; Robomatik clamp cuber; pallet dispenser; crossover conveyor; slip sheet dispenser, wash station and tumbler.

Our machines devices and moulds are designed for high performance and high efficiency production with the use of steel pallets – the solution that ensures the best product properties by thorough compacting, with significant lowering of production costs by reducing the amount of cement used for concrete mix.

Product Details SHP5000C PRO can produce in 8 hour shift:

Product	Size	Qty / Cycle	Output/ Shift*
Hollow / Solid Concrete Blocks	200x200x400 mm	12	22,000
	150x200x400 mm	18	33,000
Uni-stone Paver (Single Paver)	225x112x80 mm	40	94,000
Rectangular Brick Paver (Single Layer)	100x200x60 mm	54	127,000
Flyash Bricks	230x110x75 mm	40	88,000

Machine Specifications & Advantages:

- Possibility to manufacture a wide variety of products with heights from 40mm to 550mm.
- Equipped with COLORMIX system for manufacture of concrete products with colored surface layer.
- Compact Design – the hydraulic unit is integrated with the machine.
- Size of Production Pallets – 1400 x 1100mm. Steel pallets allows to achieve high quality of concrete products.
- Output of approx. 250 production cycles can be achieved per hour.

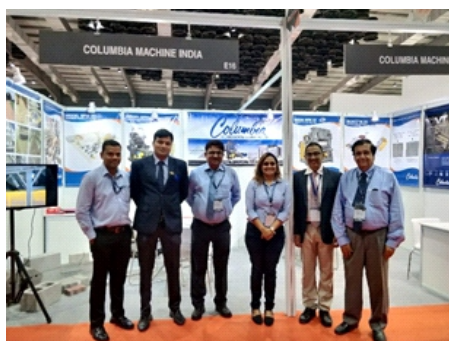
The TECHMATIK factory was founded in summer 2004 in the Radom Subzone of the Tarnobrzeg Special Economic Zone, in Poland. The company constantly expands its product portfolio by launching new machines and devices, which are thoroughly tested in the Company's own testing facility in Random.

We are sure to have the right solution for your business. Interested in our equipment? Contact us for a visit.

Recently Concluded Shows:



Buildexpo Africa, May'18 at Nairobi, Kenya



Concrete Show, May'18 at Mumbai, India.



Where we will be Next?

Find us this Tradeshow:



10th - 12th August'18,
Booth No. A17
A Convention Hall,
Vijayawada, Andhra Pradesh

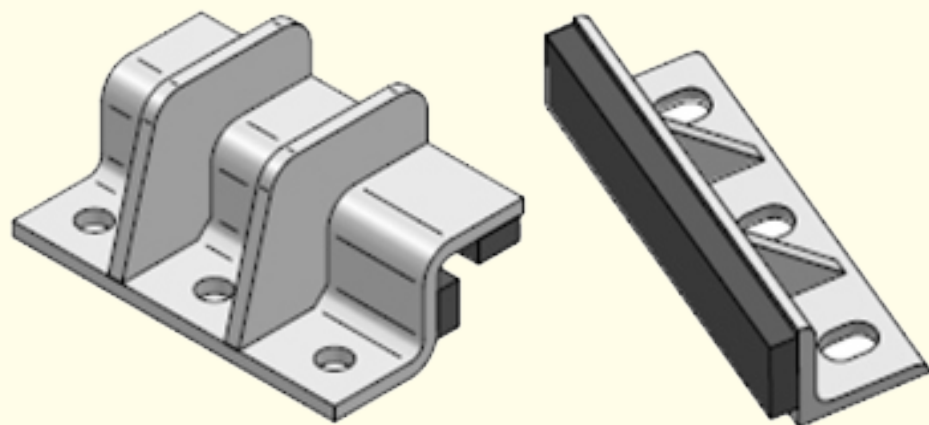


24th - 26th August'18,
Booth No. B8
Hall B, BMICH, Colombo,
Sri Lanka.

Reach us at:

COLUMBIA MACHINE ENGINEERING (I) PVT. LTD.
1, Rahimtoola House, 7 Homji Street, Fort, Mumbai – 400 001. India
TEL : +91-22-6743 4330 / 4331

SERVICE TIPS

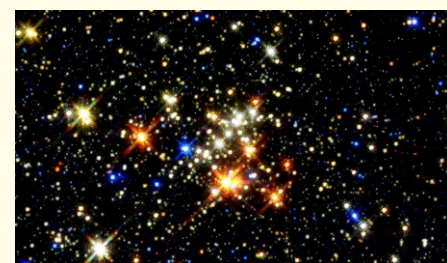


Rear anchor assembly C155 01 55

Front anchor C155 01 52

Machine base anchor assemblies are provided to help keep the machine from moving around. These should be installed and only brought up against the base plate with approximately .005 inch. / 0.127 mm for both types of mounts. It is not advised that these hold the machine solid as the machine needs to move somewhat resting on the bottom mounts allowing the vibration to be absorbed in the lower mounts.

DID YOU KNOW?



- A space suit costs USD12 million
- According to astronauts, space smells like seared steak, hot metal and welding fumes
- In 1962, US blew up a hydrogen bomb in space that was 100 times more powerful than Hiroshima. Wonder what difference it made up there!
- The international space station is the most expensive object ever built at USD 150 Billion.
- In 1977, we received a signal from deep space that lasted 72 seconds. We still don't know how or where it came from.
- Each year the moon moves 3.78 cms further away from the earth and our planet's rotation is slowing.
- Space is a huge place; more than 3000 new stars are born every second.